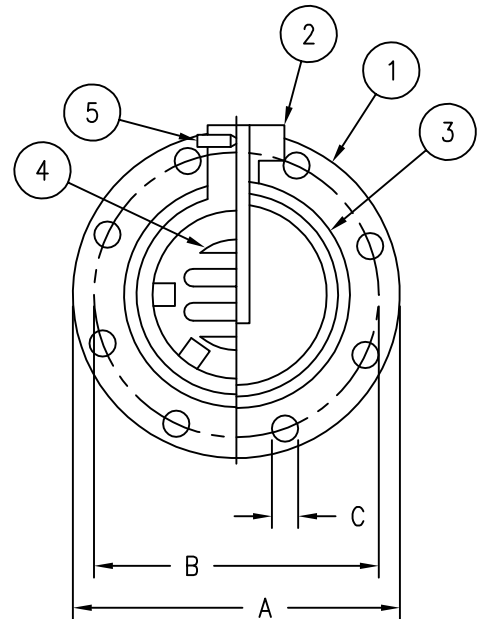
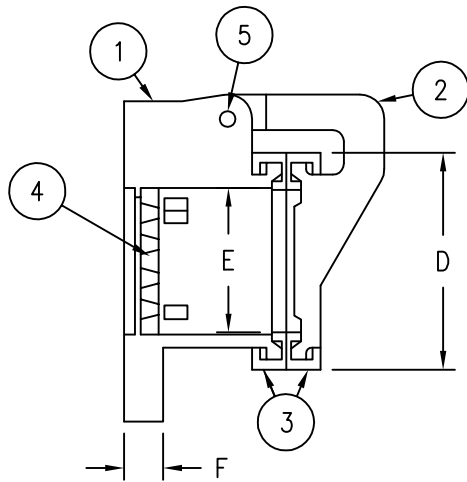




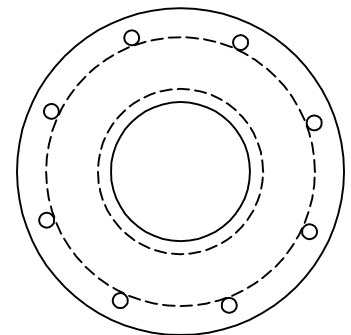
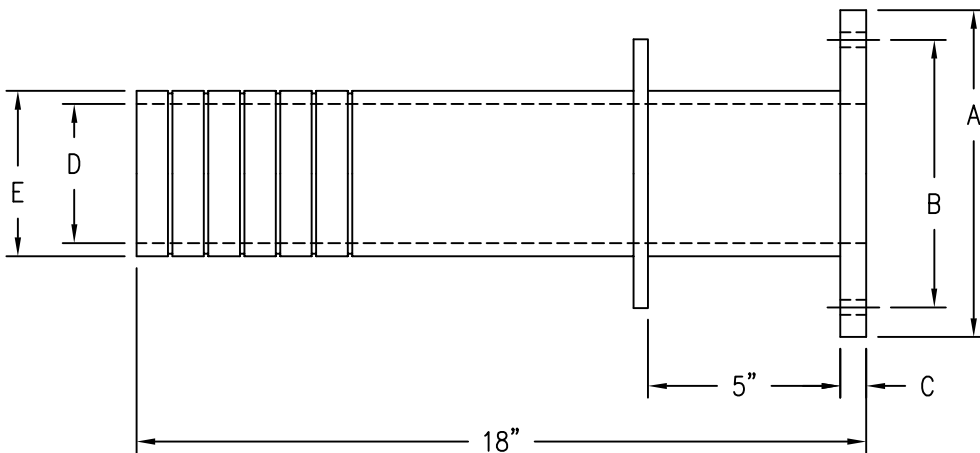
PRESSURE RELIEF VALVE WALL TYPE & PIPE

ITEM	PART	MATERIAL
1	BODY	CI 30 GREY IRON
2	LID	CI 30 GREY IRON
3	SEAL	BUNA - N
4	GRATE	CI 30 GREY IRON
5	PIN	STAINLESS STEEL



WALL TYPE PRESSURE RELIEF VALVE

SIZE	A	B	C	D	E	F
4"	9	7.50	$25/32$	6	$4 \frac{1}{8}$	1
6"	11	9.50	$7/8$	8	6	$1 \frac{1}{6}$



WALLPIPE

SIZE	A	B	C	D	E	F
4"	9	$7 \frac{1}{2}$	$15/16$	4	$4 \frac{5}{8}$	5/8-11 UNC
6"	11	$9 \frac{1}{2}$	1	5.8	6.9	3/4-10 UNC

125# TEMPLATE FOR DRILLING
MATERIAL: CI 30 GREY IRON