

Aluminum Stop Logs Suggested Specifications

The aluminum stop logs were shown in the plans and specifications shall be as manufactured by **Northcoast Valve & Gate, Inc.**

Materials of Construction

Frame - Aluminum, ASTM B209 or 6061

Logs - Aluminum, ASTM B209 or 6061

Fasteners - Stainless Steel, ASTM F593 Type 304

Rubber Seals - Neoprene, ASTM D2000

Hooks - Aluminum, ASTM B209 alloy 6063 or Stainless Steel, ASTM A276 Type 304

Grooves

Stop log grooves shall be of aluminum type 6061 with integral tabs for either channel mounted or embedded installations.

Stop Log Panels

Stop log panels shall be of the size and quantity as shown on the plans. Logs shall be provided with adequate drainage. Logs shall be fully welded design with two hooks to engage the log lifting device.

Seals

Seals shall be attached to the bottom and sides of the log assemblies. A seal shall be formed all around the waterway channel and between each stop log panel. Seals shall be held in place with aluminum cover bars and stainless steel fasteners.

Log Lifting Device

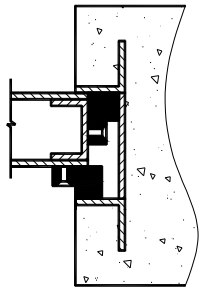
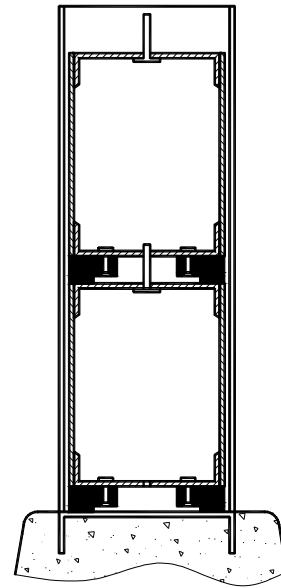
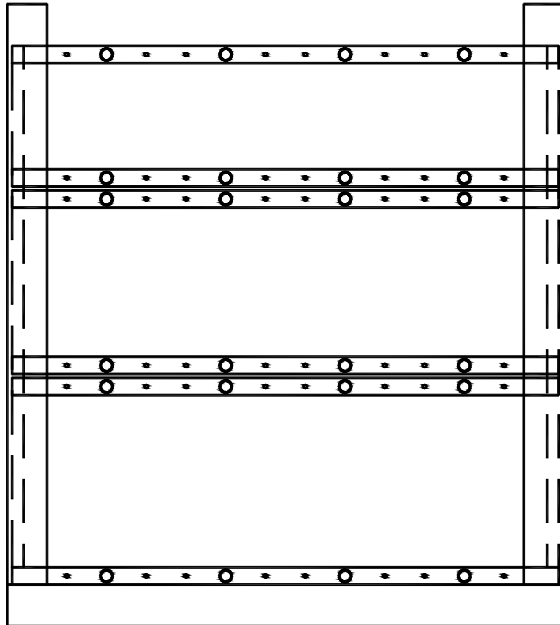
The log lifting device shall be gravity engaged and shall be complete with telescoping guide wheels to position device properly in stop log frame. Lifting device shall include spring loaded arms that are fully retractable and effective when logs are submerged.



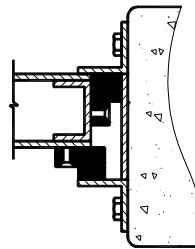
STOP LOGS

SERIES AL-1000 - EMBEDDED
SERIES AL-2000 - CHANNEL MOUNTED

- * ALUMINUM OR STAINLESS STEEL FRAMES
- * VARIOUS SIZES TO HANDLE HEAD CONDITIONS
- * SPRING ACTIVATED LOG LIFTERS



EMBEDDED FRAME



CHANNEL MOUNTED FRAME